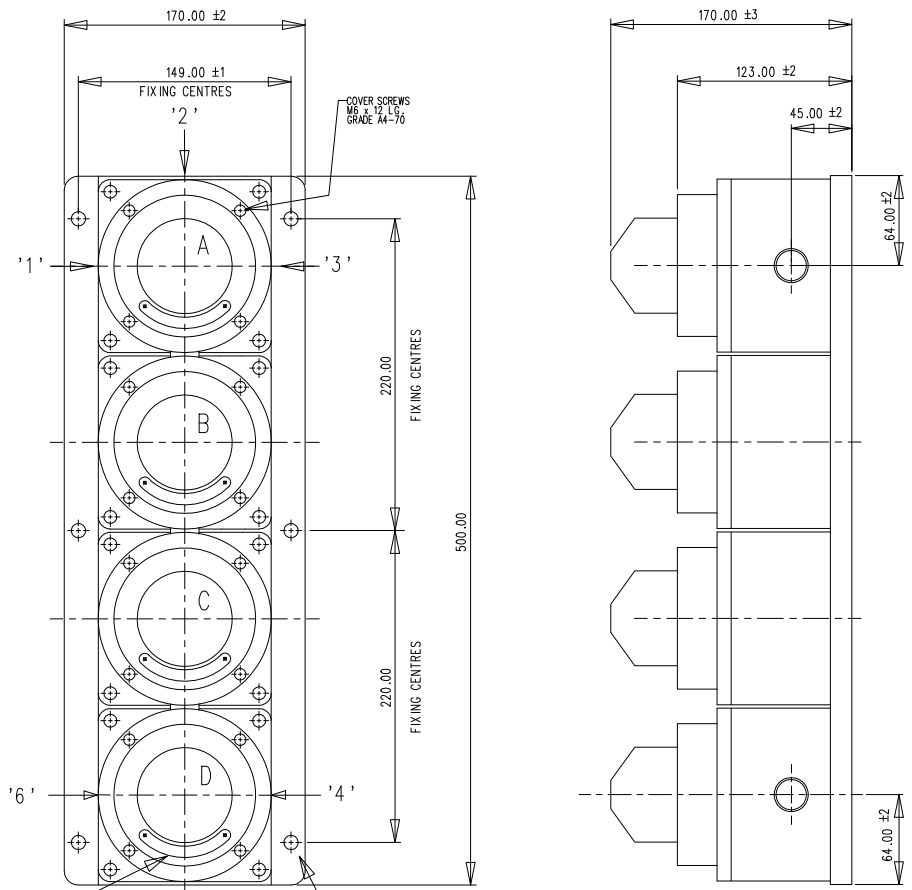
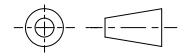


DO NOT SCALE



OPTIONAL
FUNCTION/TAG LABEL
MATERIAL - STAINLESS STEEL GRADE 316

- 1/ TYPE SM87 SL4
- 2/ CERTIFICATION No. Baseefa03ATEX0222
EExdIIC T4 (FILAMENT)
EExdIIC T6 (XENON & FLUORESCENT)
- 3/ WEIGHT - XB - 3.8±0.2Kg.
HXB - 3.8±0.2Kg.
LU1 - 3.7±0.2Kg.
LU3 - 3.5±0.2Kg.
BACKPLATE - 0.4/0.15Kg. (APPROX)
- 4/ MATERIAL - STAINLESS STEEL GRADE 316/ANC 4B TO BS3146:1975
OR MARINE ALLOY GRADE LM25F TO BS1490:1988.
- 5/ FUNCTION/TAG LETTER SIZE 5mm MAX.
- 6/ TERMINALS SUITABLE FOR UP TO 1.5mm SQ. CABLE
- 7/ CABLE ENTRIES AVAILABLE AT "1" "2" "3" "4" "5" & "6".
- 8/ POSITIONS "A" "B" "C" "D" ANY COMBINATION OF XB/HXB/LU1/LU3
- 9/ BACKPLATE THICKNESS 2.5/1.5mm.



Cooper MEDCO Ltd, Unit B, Sutton Parkway,
Oddicroft Lane, Sutton-in-Ashfield,
Nottinghamshire, NG17 5FB, U.K.
Tel: +44 (0) 1623 444400
web: www.coopermedco.com

DESIGNERS & MANUFACTURERS
OF ELECTRICAL & ELECTRONIC
EQUIPMENT & SYSTEMS FOR
HAZARDOUS AREAS

ISSUES	D. 20-03-15. DW	GENERAL TOLERANCES U.O.S		ALL DIMENSIONS ARE IN MILLIMETRES UNLESS OTHERWISE STATED	THIS DRAWING IS CONFIDENTIAL AND IS THE PROPERTY OF MEDCO AND MUST NOT BE REPRODUCED EITHER WHOLLY OR PARTLY. ALL RIGHTS IN RESPECT OF PATENTS, DESIGNS AND COPYRIGHT ARE RESERVED.	DRAWN BY: C. F.	DATE: 20-11-92	TITLE SM87SL4	
		LINEAR: ±0.25				CHECKED BY: S. J. M.	DATE: 20-11-92		
		ANGULAR: ±0.5°				APPROVED BY: S. J. M.	DATE: 20-11-92		
		SURFACE FINISH: $\sqrt{3.2}$				MACHINE SYMBOLS THUS $\sqrt{\mu m}$	SCALE: -	SIZE A4	DRG No. S/052-01-04