

JB10 & JB11 junction boxes range

Hazardous locations, ordinary locations



Overview

These GRP terminal boxes have been designed for use in hazardous locations and hostile environments.

The robust design, coupled with corrosion-free glass reinforced polyester and high ingress protection, ensure a long life, low maintenance product.

European and other world wide approvals are available, refer to main section of catalogue.

Features

- UL certified for USA and Canada:
 - Class I, Div 2, Groups A,B, C, D
 - Class I, Zone 1, AEx e IIC, Ex e IIC
- ATEX approved
- IECEx approved
- NEMA 4x & 6, IP66 & IP67.
- Certified temperature:
 - 4°F to +131°F
 - 20°C to +55°C
- Glass reinforced polyester
- Lightweight
- Robust
- Corrosion free
- Retained stainless steel cover screws
- Optional gland continuity plate
- Mixed rail mounted terminals



Certifications

UL	Cert No. E237592 Class I, Div. 2, Groups A, B, C & D Class I, Zone 1, AEx e IIC, Ex e IIC
----	---

Specifications

Material	Glass reinforced polyester, stainless steel cover screws
Finish	Self coloured black
Certified temp	Standard -4°F to +131°F (-20°C to +55°C)
Weight	JB10, 2.4 lbs (1.1 Kg.) average JB11, 4.0 lbs (1.8 Kg.) average
Gland continuity	Via an internal BZP (bright zinc plated) steel plate
Ingress protection	NEMA 4x & 6, IP66 & IP67

Terminal type/size	Max no. of terminal		Earth terminal	Max voltage (V)	Max current (A)	T rating at +55°C (+40°C)
	JB10	JB11				
UK2.5N	9	15	USLKG5N	550	15	T4 (T6)
UK5N	7	14	USLKG5N	418	21	T4
UK10N	4	9	USLKG10N	550	37	T4
UK16N	3	7	USLKG16N	550	47	T4
MK6/6	6	6	Internal earth stud	418*	24	T5
BK4	4	-	Internal earth stud	275	21	T5
BK6	6	-	Internal earth stud	275	21	T5

*275V if fitted with QB2 or QB4 cross connection links

All junction boxes will be supplied with an internal earth terminal appropriate to the terminals fitted. If more than one internal earth terminal is required the maximum number of feed-through terminals must be reduced

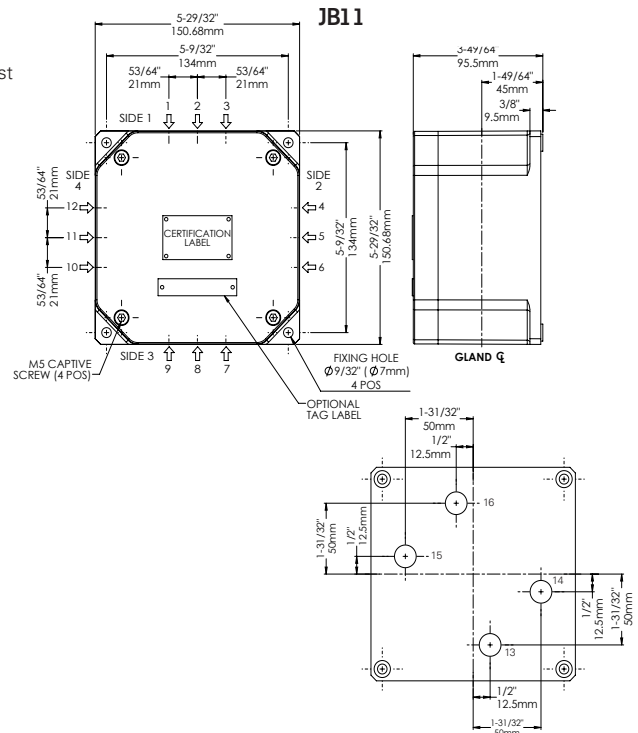
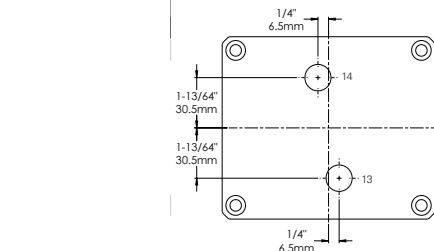
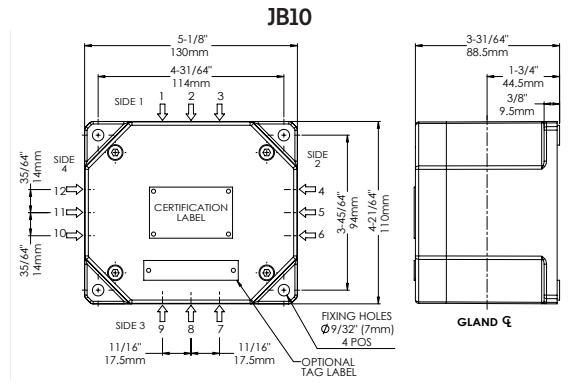
JB10 gland details

Gland entries	Maximum no. of gland entries sides 1 & 3	Maximum no. of gland entries sides 2 & 4		Maximum no. gland entries (base)
		With or without earth continuity	With earth continuity	
1/2" NPT	2	1	2	2
3/4" NPT	1	1	N/A	N/A

JB11 gland details

Gland entries	Maximum no. of gland entries per side with or without earth continuity	Maximum no. of gland entries (base) with or without earth continuity
1/2" NPT	2	4
3/4" NPT	2	N/A

General arrangement drawing (all dimensions in inches)



Ordering requirements

The following code is designed to help in selection of the correct unit. Build up the reference number by inserting the code for each component into the appropriate box

Terminal box	Certification	Terminals	Earth continuity	Gland continuity	Side cable entries	Tag/label	Option	Finish																																							
JB10 JB11	UL	<table border="1"> <tr> <th>Type</th> <th>Code</th> </tr> <tr> <td>None</td> <td>N</td> </tr> <tr> <td>ES0001(16mm² cable max)</td> <td>R*</td> </tr> <tr> <td>ES0003(16mm² cable max)</td> <td>S*</td> </tr> </table> <p>*Suffix with side, e.g: R1 ES0001 x side 1</p>	Type	Code	None	N	ES0001(16mm ² cable max)	R*	ES0003(16mm ² cable max)	S*	<table border="1"> <tr> <th>Continuity</th> <th>Code</th> </tr> <tr> <td>None</td> <td>N</td> </tr> <tr> <td>Yes</td> <td>E*</td> </tr> </table> <p>*Gland continuity 'E' must be selected when Ext earth 'R' or 'S' is required</p>	Continuity	Code	None	N	Yes	E*	<table border="1"> <tr> <th>Size</th> <th>Code</th> </tr> <tr> <td>None</td> <td>N</td> </tr> <tr> <td>1/2" NPT</td> <td>M*†</td> </tr> <tr> <td>3/4" NPT</td> <td>O*†</td> </tr> </table> <p>* Prefix with cable entry position (see diagram above) e.g 2M † UL version supplied with adaptor</p>	Size	Code	None	N	1/2" NPT	M*†	3/4" NPT	O*†	<table border="1"> <tr> <th>Label</th> <th>Code</th> </tr> <tr> <td>None</td> <td>N</td> </tr> <tr> <td>Yes</td> <td>T*</td> </tr> </table> <p>*Please specify</p>	Label	Code	None	N	Yes	T*	<table border="1"> <tr> <th>Option</th> <th>Code</th> </tr> <tr> <td>None</td> <td>N</td> </tr> <tr> <td>Extra internal earth</td> <td>W*</td> </tr> <tr> <td>Base entry</td> <td>Y*</td> </tr> </table> <p>* Please discuss your requirements with MEDC application engineers prior to ordering</p>	Option	Code	None	N	Extra internal earth	W*	Base entry	Y*	<table border="1"> <tr> <th>Finish</th> <th>Code</th> </tr> <tr> <td>Natural black</td> <td>N</td> </tr> </table>	Finish	Code	Natural black	N
Type	Code																																														
None	N																																														
ES0001(16mm ² cable max)	R*																																														
ES0003(16mm ² cable max)	S*																																														
Continuity	Code																																														
None	N																																														
Yes	E*																																														
Size	Code																																														
None	N																																														
1/2" NPT	M*†																																														
3/4" NPT	O*†																																														
Label	Code																																														
None	N																																														
Yes	T*																																														
Option	Code																																														
None	N																																														
Extra internal earth	W*																																														
Base entry	Y*																																														
Finish	Code																																														
Natural black	N																																														
		<table border="1"> <tr> <th>Certification</th> <th>Code</th> </tr> <tr> <td>MK6/6</td> <td>J*</td> </tr> <tr> <td>BK6</td> <td>K*</td> </tr> <tr> <td>UK2.5N</td> <td>L*</td> </tr> <tr> <td>UK5N</td> <td>M*</td> </tr> <tr> <td>UK10N</td> <td>N*</td> </tr> <tr> <td>UK16N</td> <td>O*</td> </tr> <tr> <td>BK4</td> <td>R*</td> </tr> </table> <p>* Suffix with number of terminals, e.g: L6 = 6 x UK 2.5N Terminal types can be mixed, eg L4M2</p>	Certification	Code	MK6/6	J*	BK6	K*	UK2.5N	L*	UK5N	M*	UK10N	N*	UK16N	O*	BK4	R*																													
Certification	Code																																														
MK6/6	J*																																														
BK6	K*																																														
UK2.5N	L*																																														
UK5N	M*																																														
UK10N	N*																																														
UK16N	O*																																														
BK4	R*																																														